



**Gregory Sprouse**  
Director of Research, Planning, and Development  
Central Midlands Council of Governments

# The “Forming” Stage of Collaborative, Integrated, Regional, Resilience Planning

**2018 Carolinas Climate Resilience Conference**  
**October 29-31, 2018**  
**Columbia, SC**

## Mission Statement

Provide the highest quality of planning, technical assistance and services to local governments and citizens in the Central Midlands Region

## Guiding Principles

- Provide a regional forum where any local government can have issues heard and needs addressed
- Advocate on behalf of regional governments, business, and citizens
- Provide planning and technical assistance with the future needs of the region in mind



# Integrative Regional Planning

## Opportunities:

- Regional councils are a natural fit for resiliency planning  
Consistent with regional mission  
(i.e., address issues that transcend political boundaries)
- Built in capacity to bridge urban rural divide
- Public, private, and non-governmental stakeholder reach
- Horizontal and vertical integration of existing planning programs

## Challenges:

- High level and long range focus
- Geographically diverse
- Limited policy/decision making authority
- Lack of dedicated funding source to work on resiliency planning
- Difficult to engage public at a grassroots level



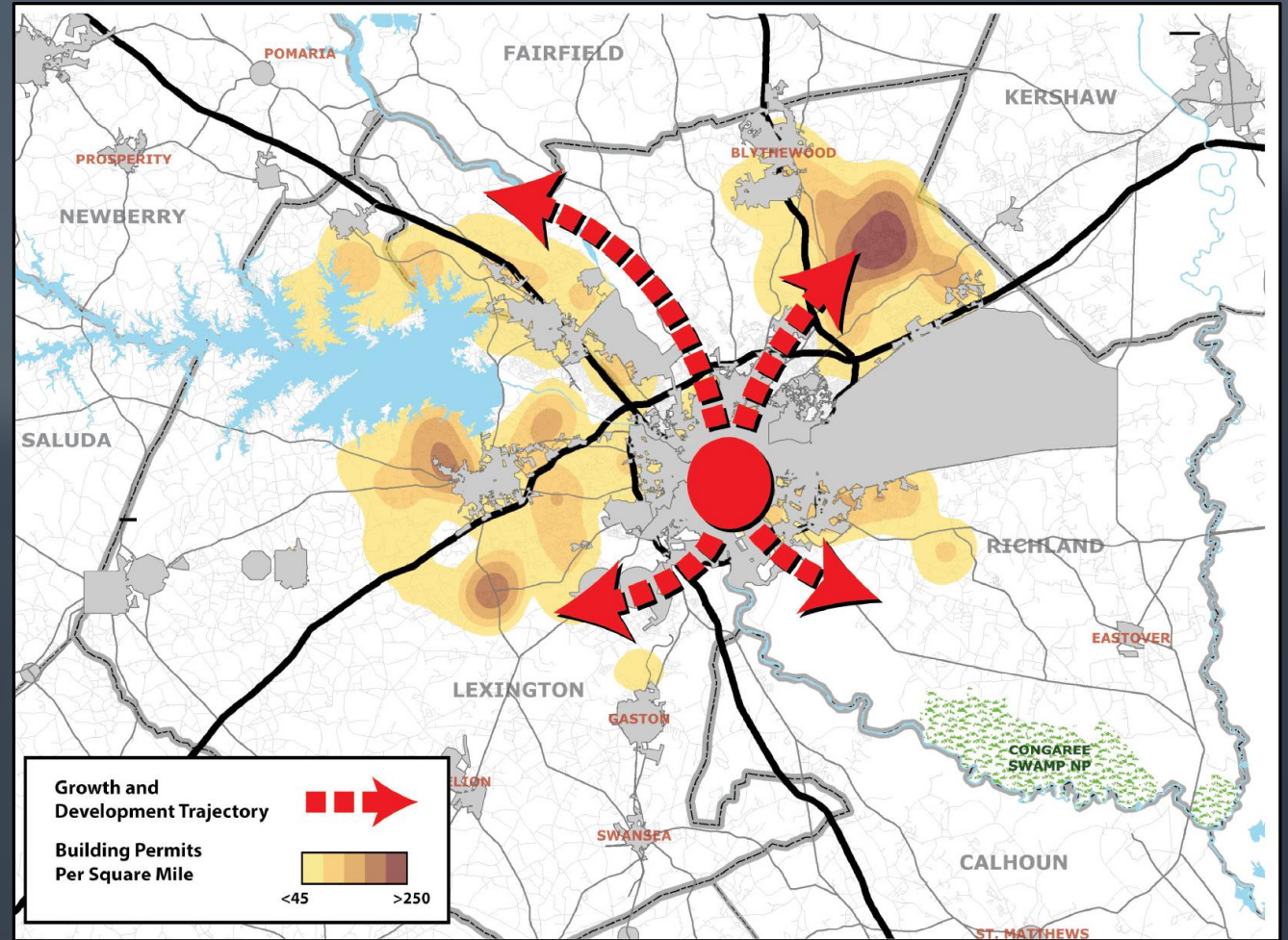
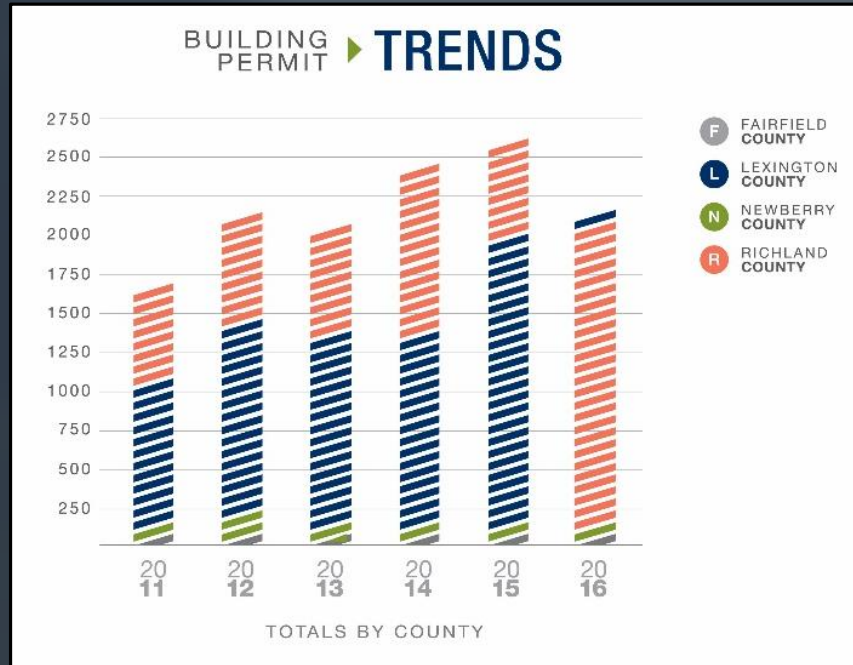


## The “Forming” Stage of Collaborative, Integrated, Regional, Resilience Planning

### ← Integrative Regional Resilience Planning →

Community Development	Economic Development	Workforce Development	Social Services	Transportation	Planning & Local Gov Assistance
CDBG Needs Assessments	EDA Comprehensive Economic Development Strategy (CEDS)	Workforce Investment Opportunity Act (WIOA)	Aging Services -Older Americans Act (e.g., Home Delivered Meals)	Long Range Transportation Planning	Population Projections
CDBG Project Development	Stakeholder Coordination	Job Placement Services		Congestion Management Planning	Natural Hazard Mitigation Planning
Grant Writing/Grant Administration	Economic Indicators Data Collection and Analysis	Business Services		Human Service Coordination	Water Resource Planning and Coordination
Community Development Corporation				Air Quality Conformity	Military - Community Compatible Land Use Coordination
Food Access/Food Security					Comprehensive Plans/Land Development Regulations

# Growth and Development Trends



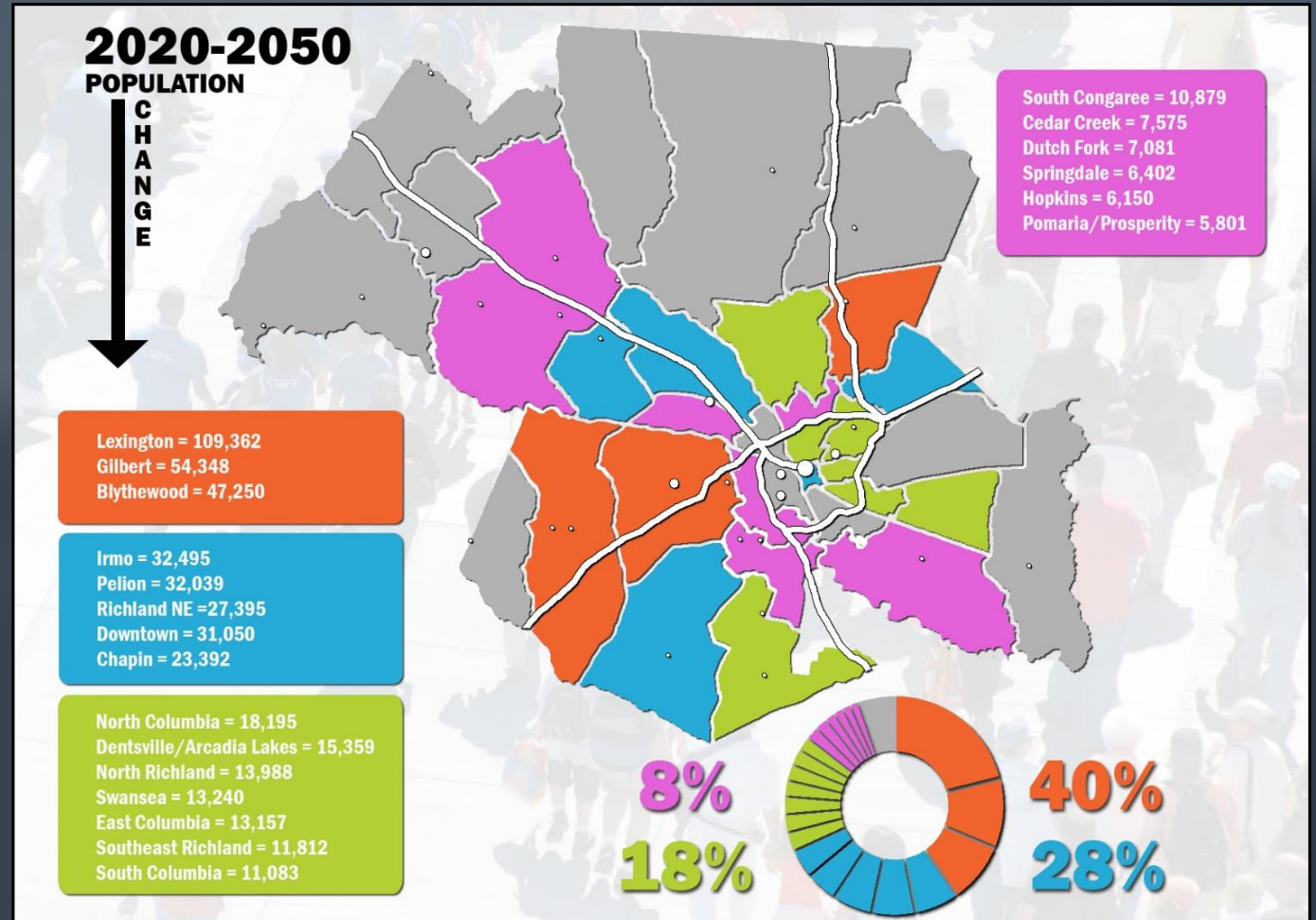
# 30 Year Regional Population Projections

2015  
Estimate

**772,274**

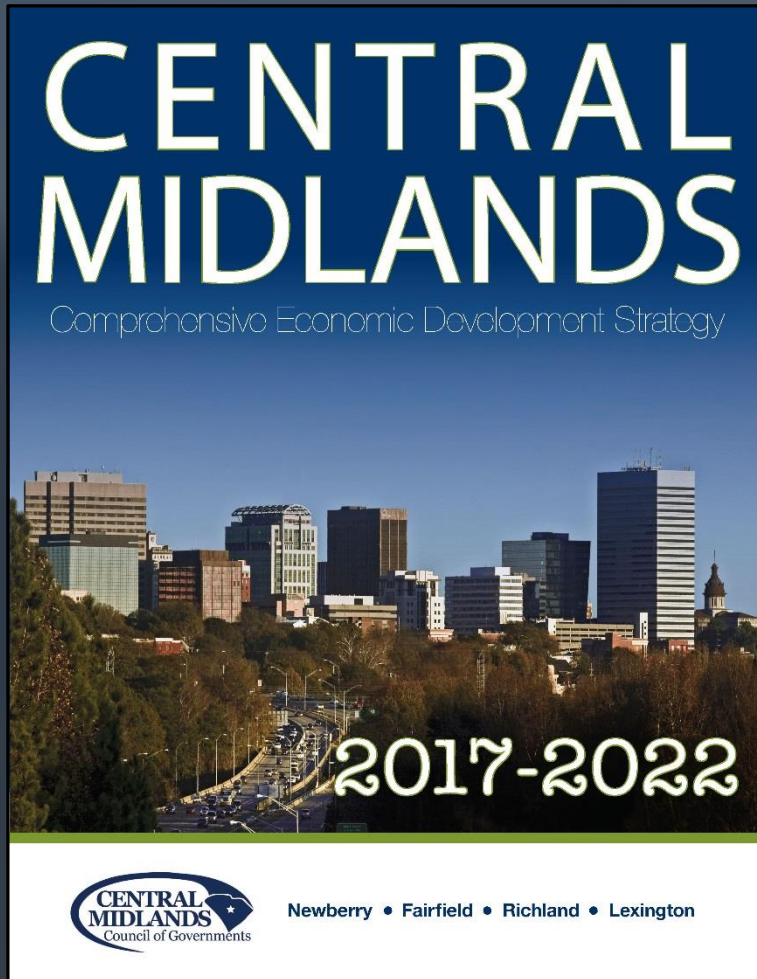
2050  
Projections

**1,365,128**





## The “Forming” Stage of Collaborative, Integrated, Regional, Resilience Planning



### What is a CEDS?

EDA Required 5 Year Plan

### CEDS Strategy Committee

Public, Private, Non-Governmental Stakeholders representing main economic interests of the region

### Document Framework

- Regional Summary
- SWOT Analysis
- Goals and Strategies

### Coordination and Synthesis with Other Plans

- Stronger Economies Together (SET)
- Midlands Business Leadership Group Regional Competitiveness Initiative

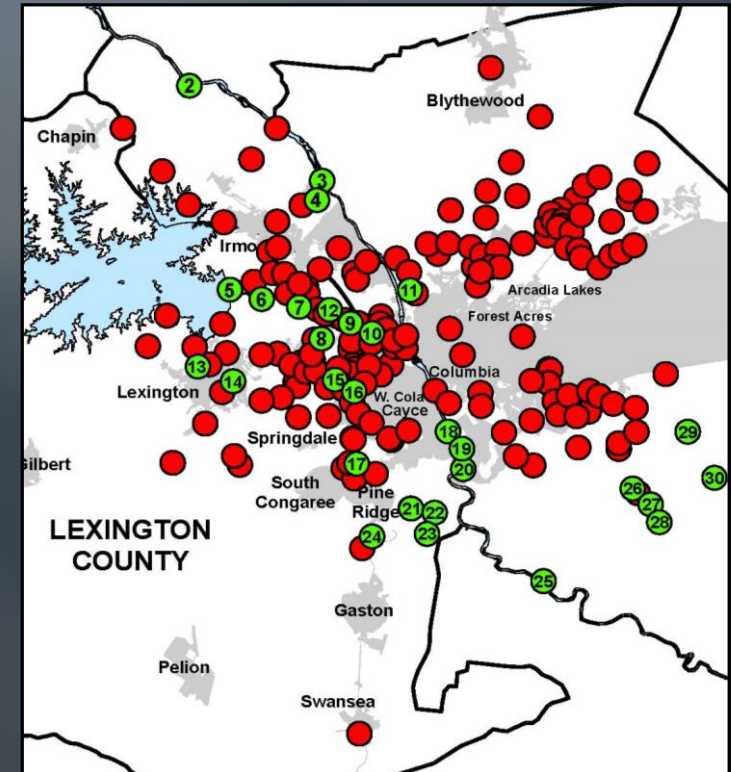
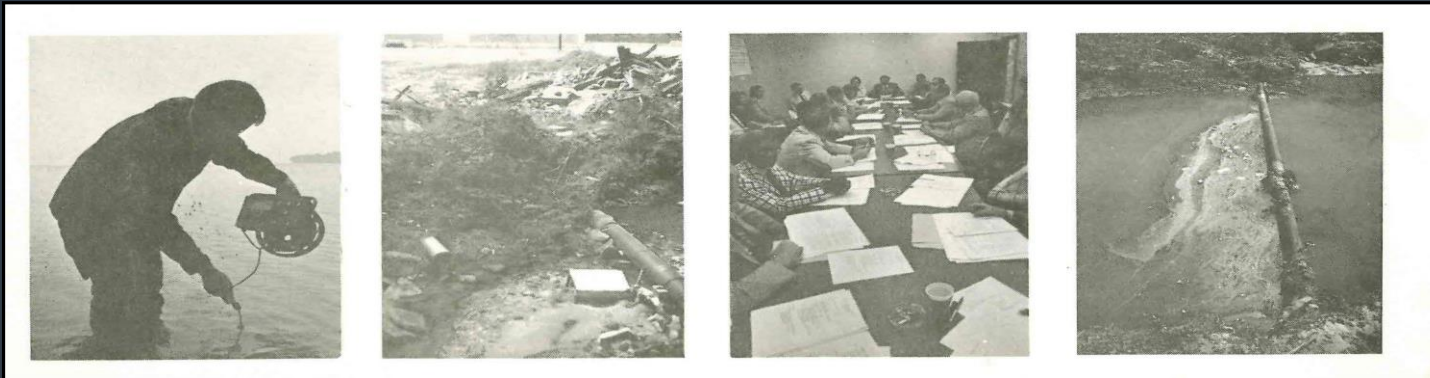
### Incorporate the Concept of Resilience

## A Brief History of 208 Water Quality Planning

- Pre-Clean Water Act Sewer Planning (1968-1971)
- HUD Funded Water and Sewer Plan for the Greater Columbia Area (1971)
- Federal Clean Water Act (1972)

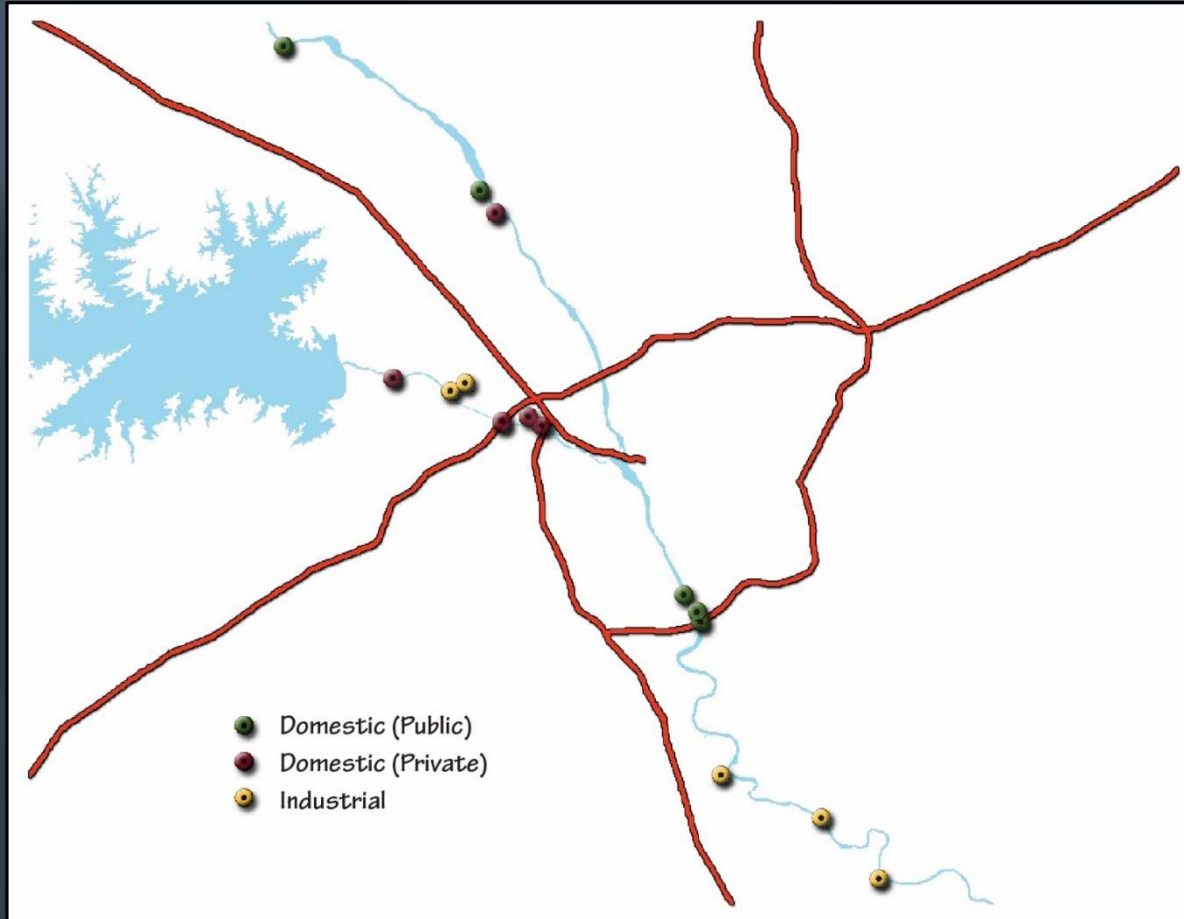
Section 201 – Grant Funding for Construction

Section 208 – Area-wide Planning for Water Quality





## The “Forming” Stage of Collaborative, Integrated, Regional, Resilience Planning



## Regional UOD Re-Allocation Stakeholder Coordination

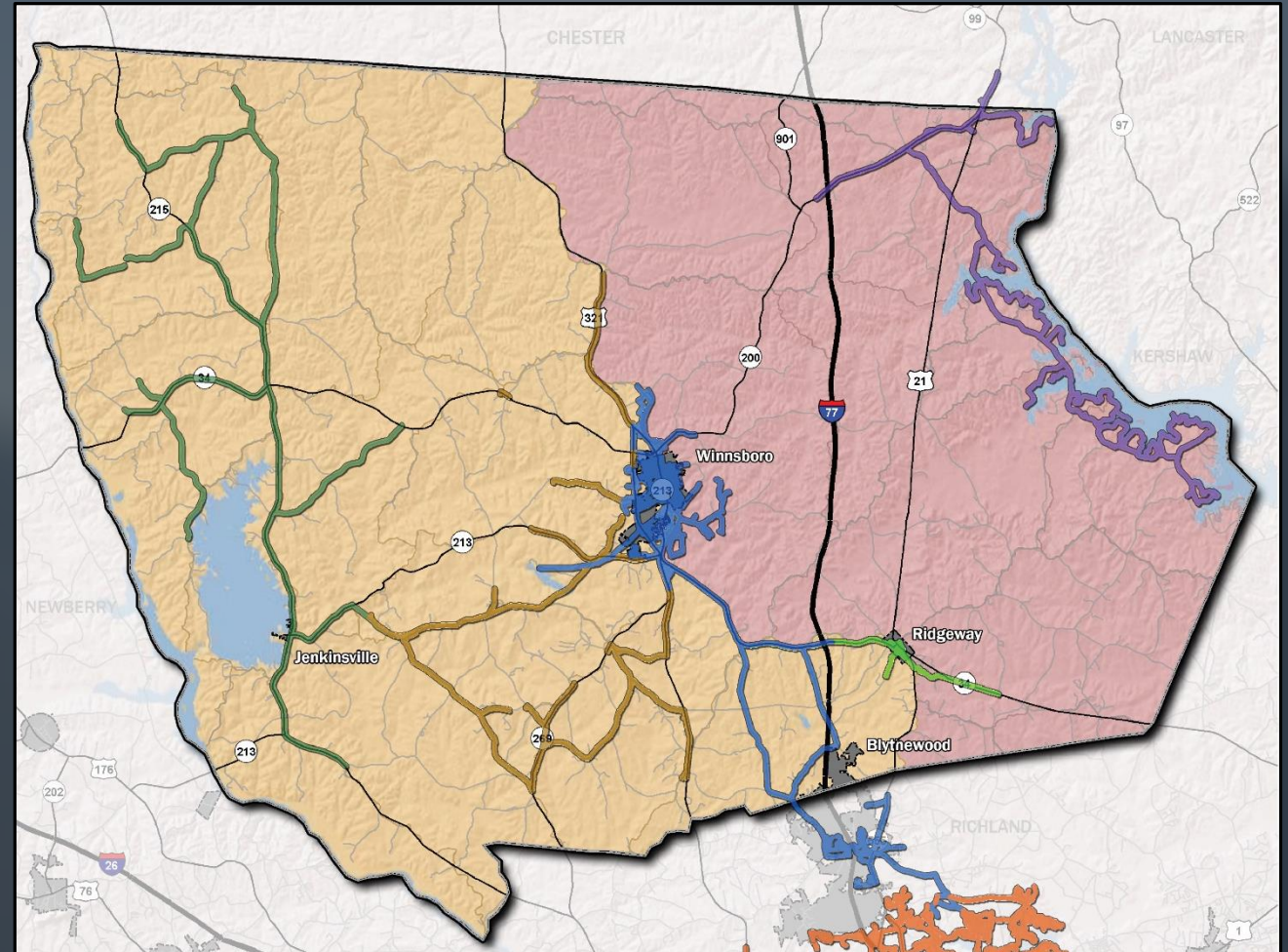
- Changing Stream Conditions = More Stringent Water Quality Standards
- DHEC Requiring UOD Reductions for Dischargers in the Broad, Lower Saluda, and Congaree Rivers
- CMCOG Role = Facilitate UOD Reallocation Process and Make a Recommendation to DHEC

**5** Public Domestic Wastewater Discharges

**6** Private Domestic Wastewater Discharges

**4** Industrial Wastewater Discharges

# Water Supply Planning and Coordination





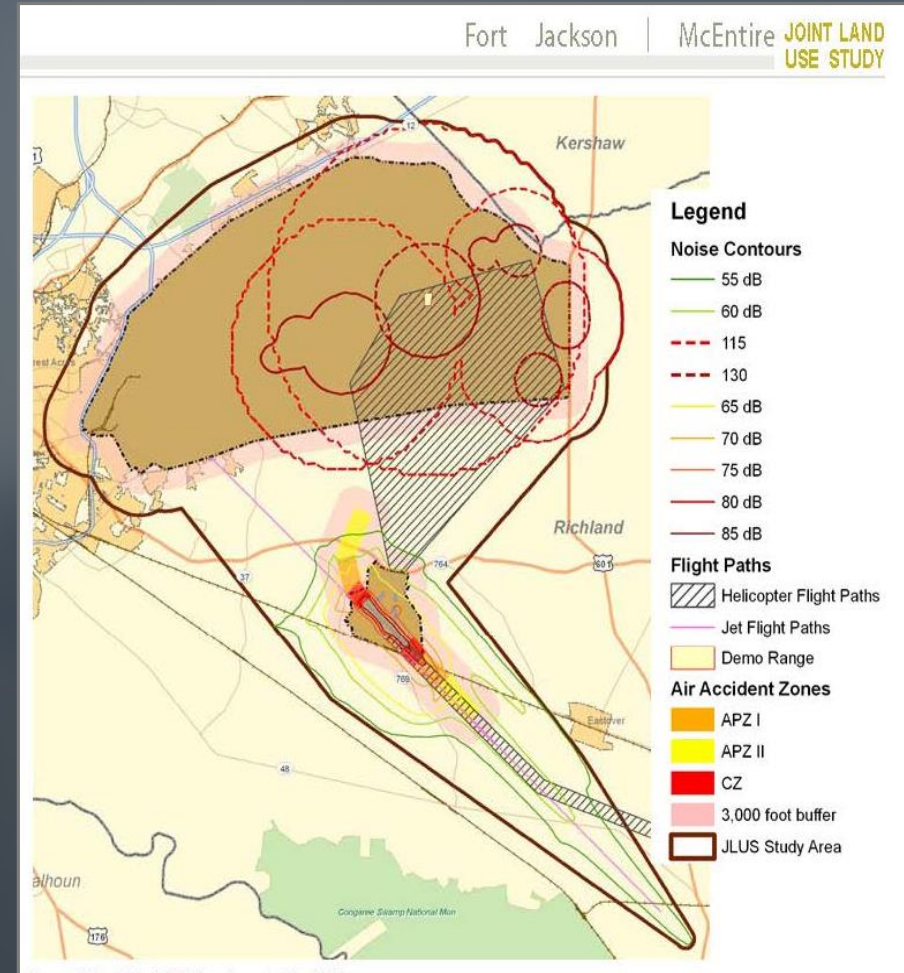
## Compatible Use Planning

- Midlands Area Joint Installation Consortium (MAJIC)
- Fort Jackson/McEntire JLUS - 2009
- Fort Jackson/McEntire JLUS Implementation – 2012  
(Regulatory Approach – Comprehensive Plan and Zoning Tools)
- Fort Jackson/McEntire JLUS Implementation – 2018  
(Market Based Incentives - “Working Lands” Preservation )
- Sumter - Shaw AFB JLUS - 2016
- MAJIC Sentinel Landscape Initiative - Ongoing

### *Working Lands*

*“Areas of land that are actively used for agriculture and forestry production, and which may support the associated livelihoods of tourism, outdoor recreation, the creative economy, and commerce in rural areas”*

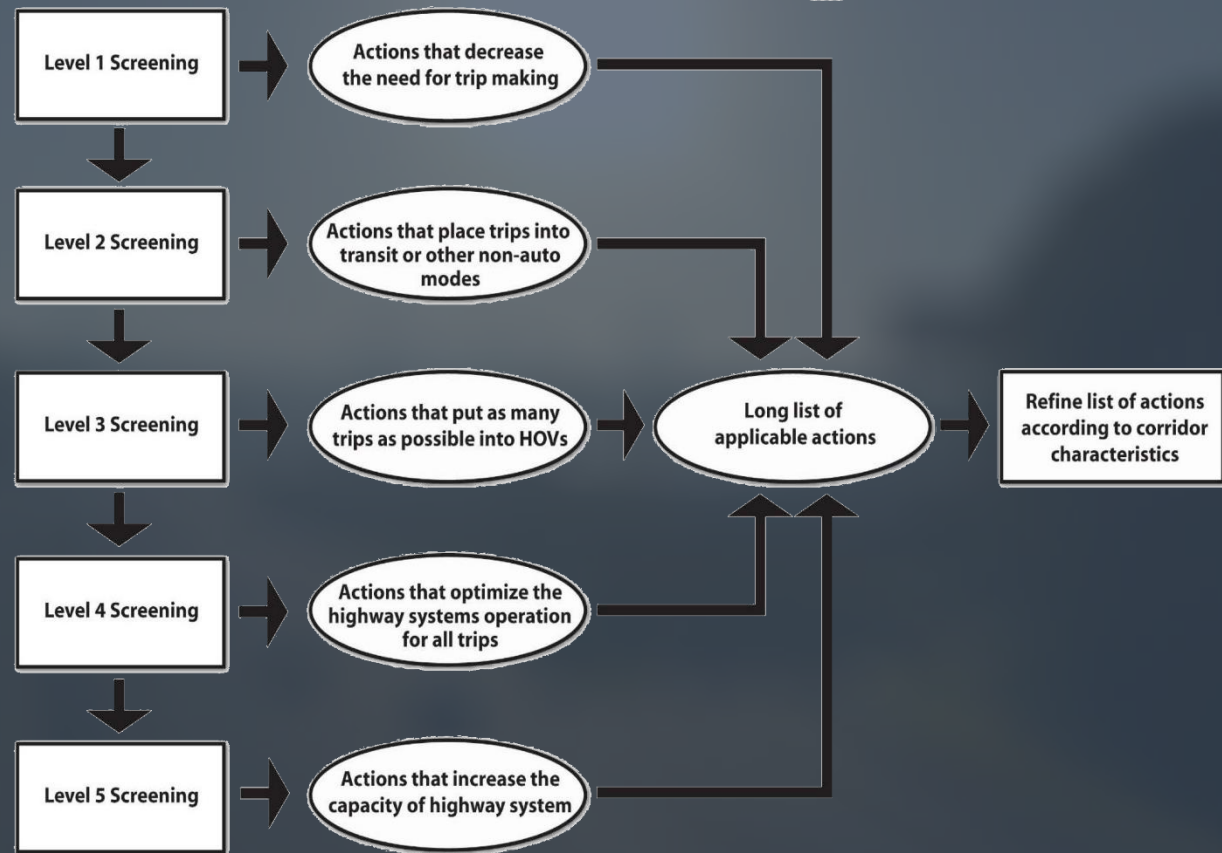
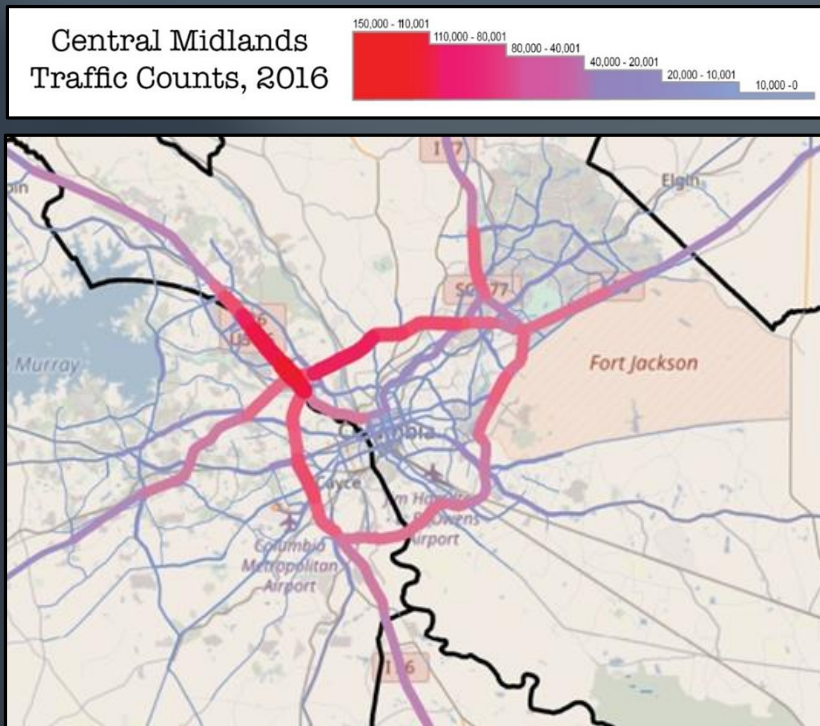
*- Morse et al., 2010*





## The “Forming” Stage of Collaborative, Integrated, Regional, Resilience Planning

# Transportation Planning



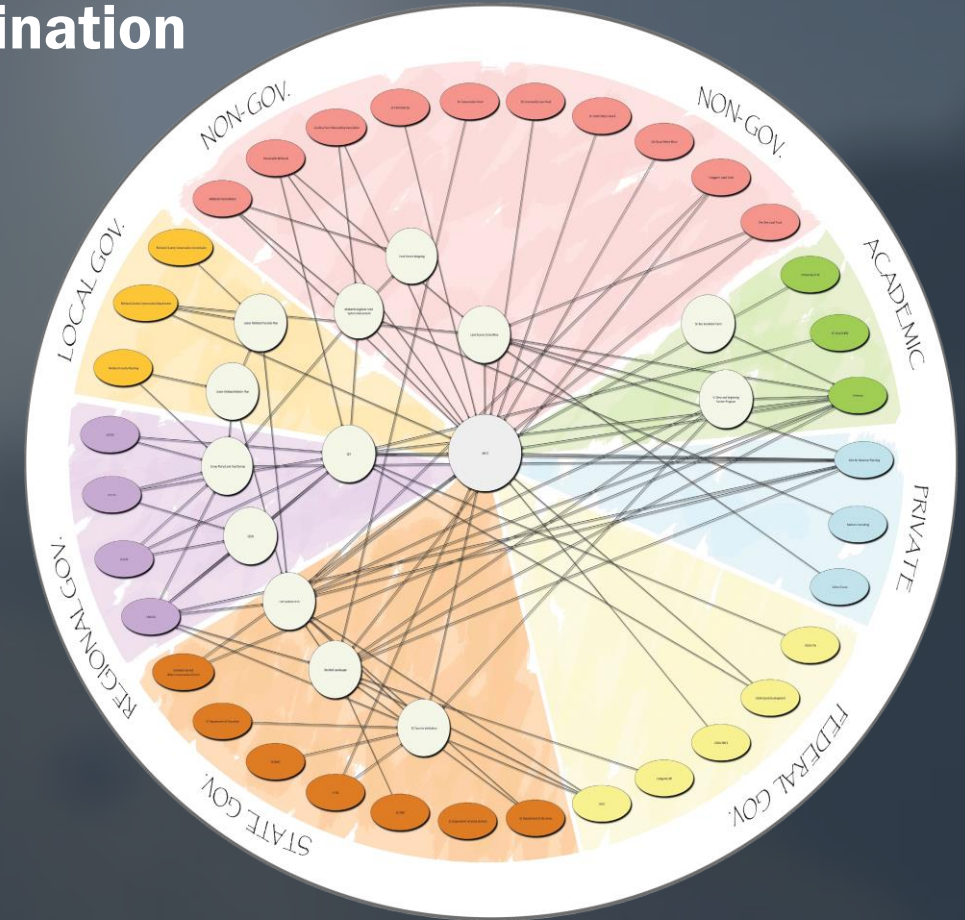
## Bringing It All Together – Stakeholder Coordination

### (Collective Impact) Strategies:

- Understand our partners and what they do
- Identify common goals and mutually reinforcing activities
- Identify the gaps, needs, and empty seats (i.e., who is not at the table)
- Strengthen the network through ongoing communication
- Identify and pursue collaborative projects
- Integrate them into existing planning framework

### Next Steps?

- Build stakeholder support
- Establish planning framework
- Identify and pursue funding sources







**Gregory Sprouse**  
Director of Research, Planning, and Development  
Central Midlands Council of Governments  
[gsprouse@centralmidlands.org](mailto:gsprouse@centralmidlands.org)

# QuestionsComments

**2018 Carolinas Climate Resilience Conference**  
**October 29-31, 2018**  
**Columbia, SC**