

PREPARING FOR RESILIENCE

Working with Faith Communities to Advance Adaptation, Recovery, and Resilience

Tim Judson

Executive Director

Nuclear Information & Resource Service

Contact:

(301) 270-6477 x12

timj@nirs.org

www.nirs.org

Twitter: @nirsnet

Carolinas Climate Resilience
October 29, 2018



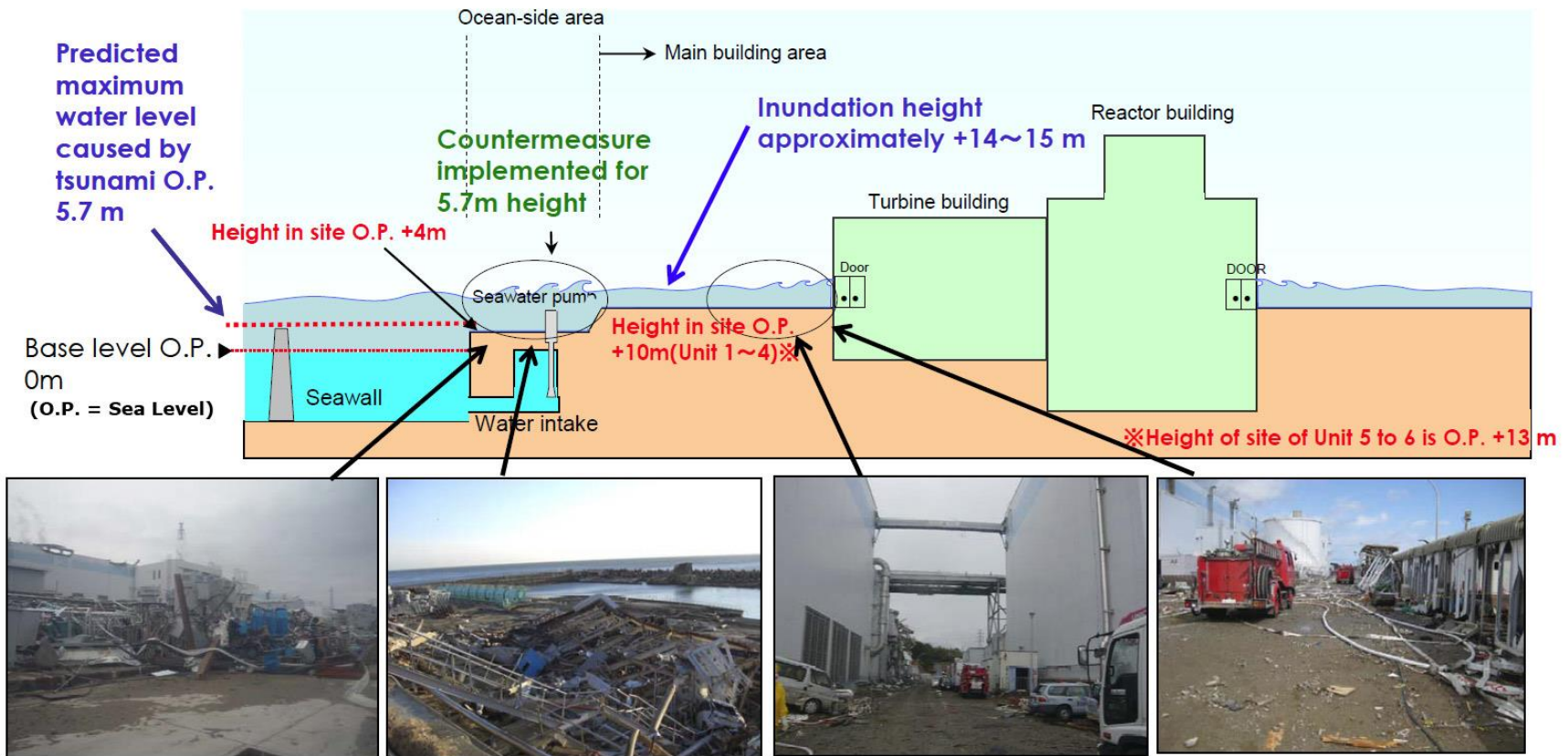
2011 Tohoku Quake Tsunami



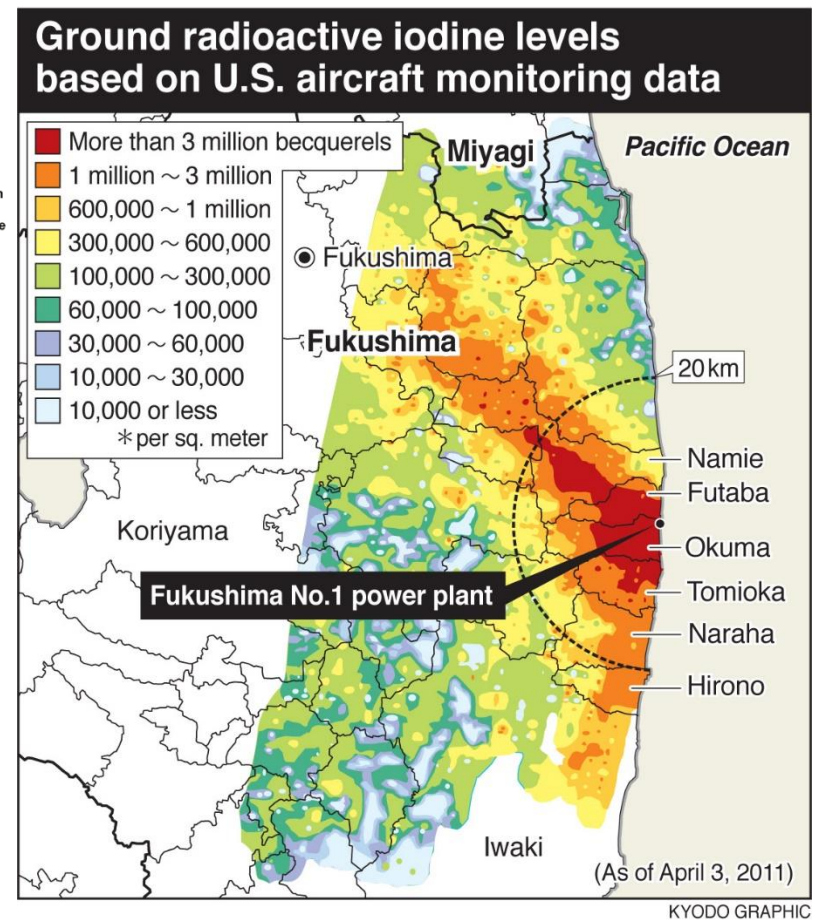
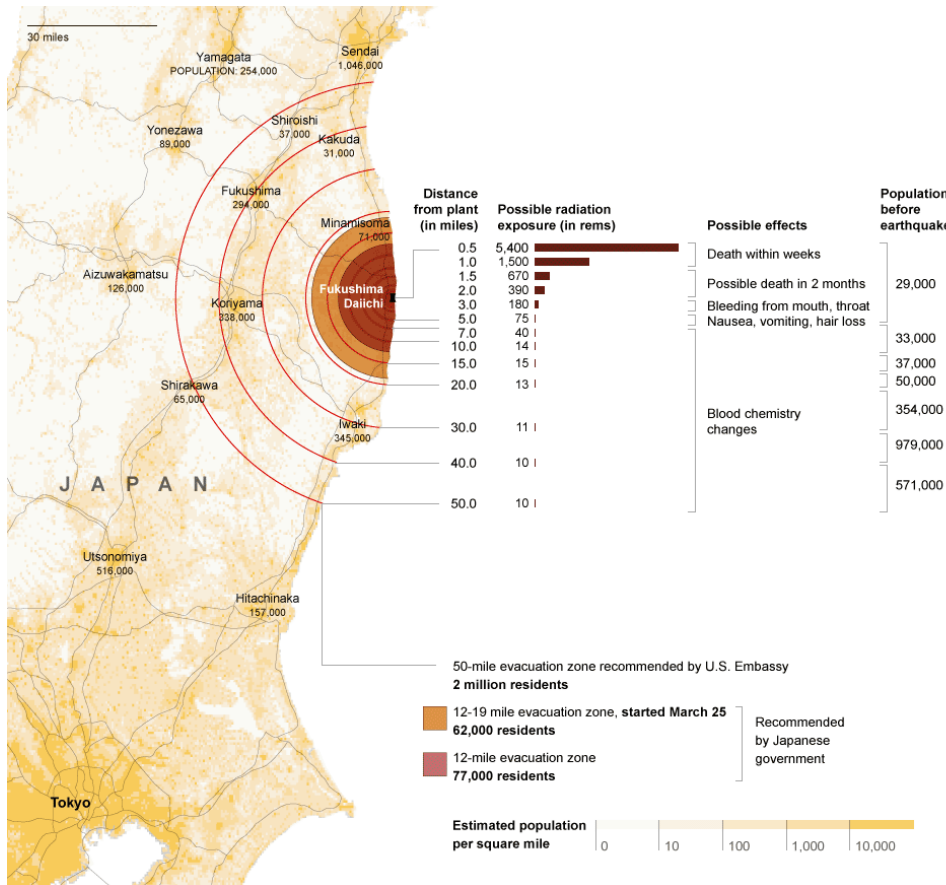
Fukushima Nuclear Site



Nature Overwhelms Old Engineering



Evacuation ... and ... Aftermath

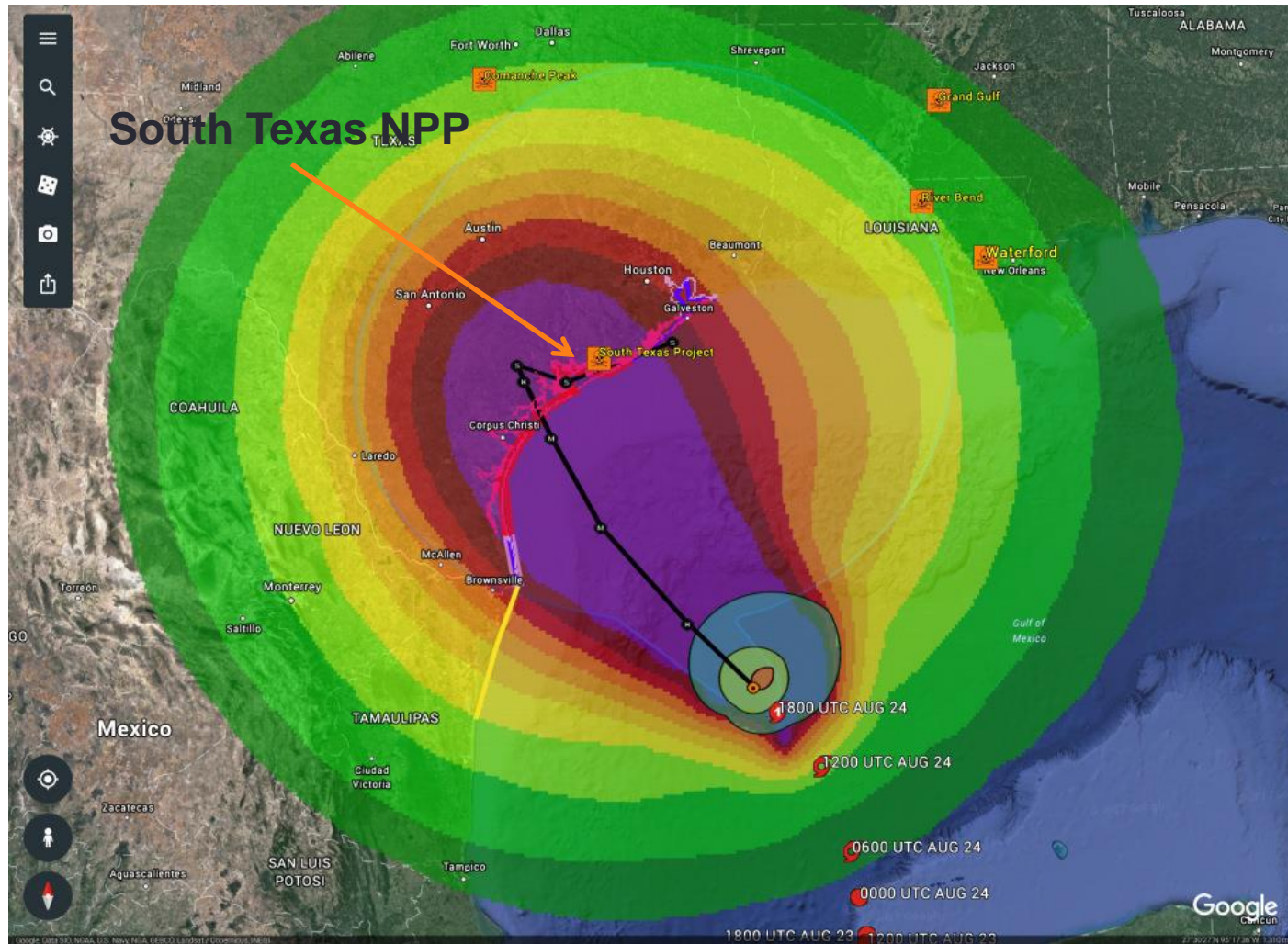


2011 Missouri River Flood

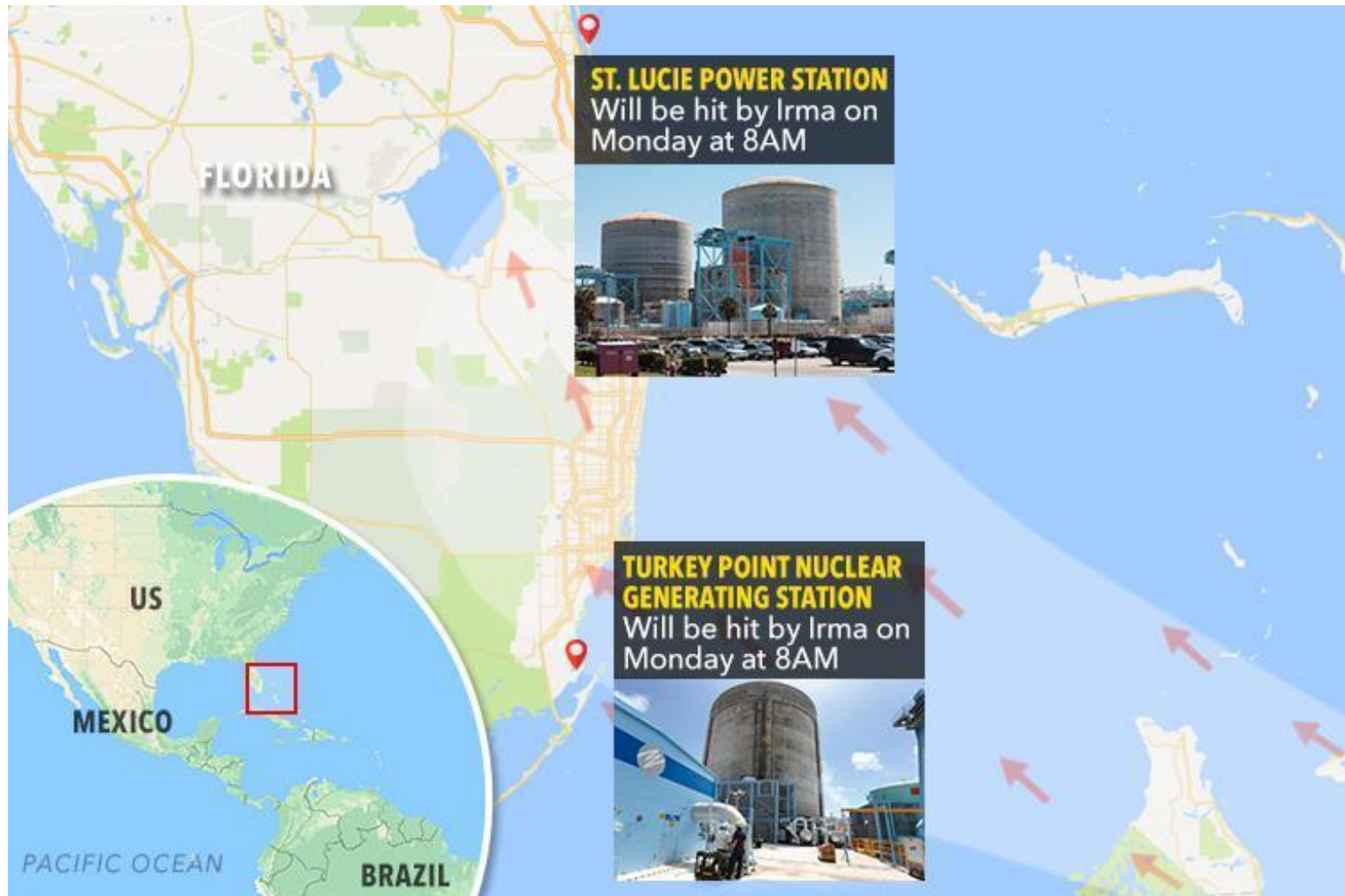
Fort Calhoun NPP



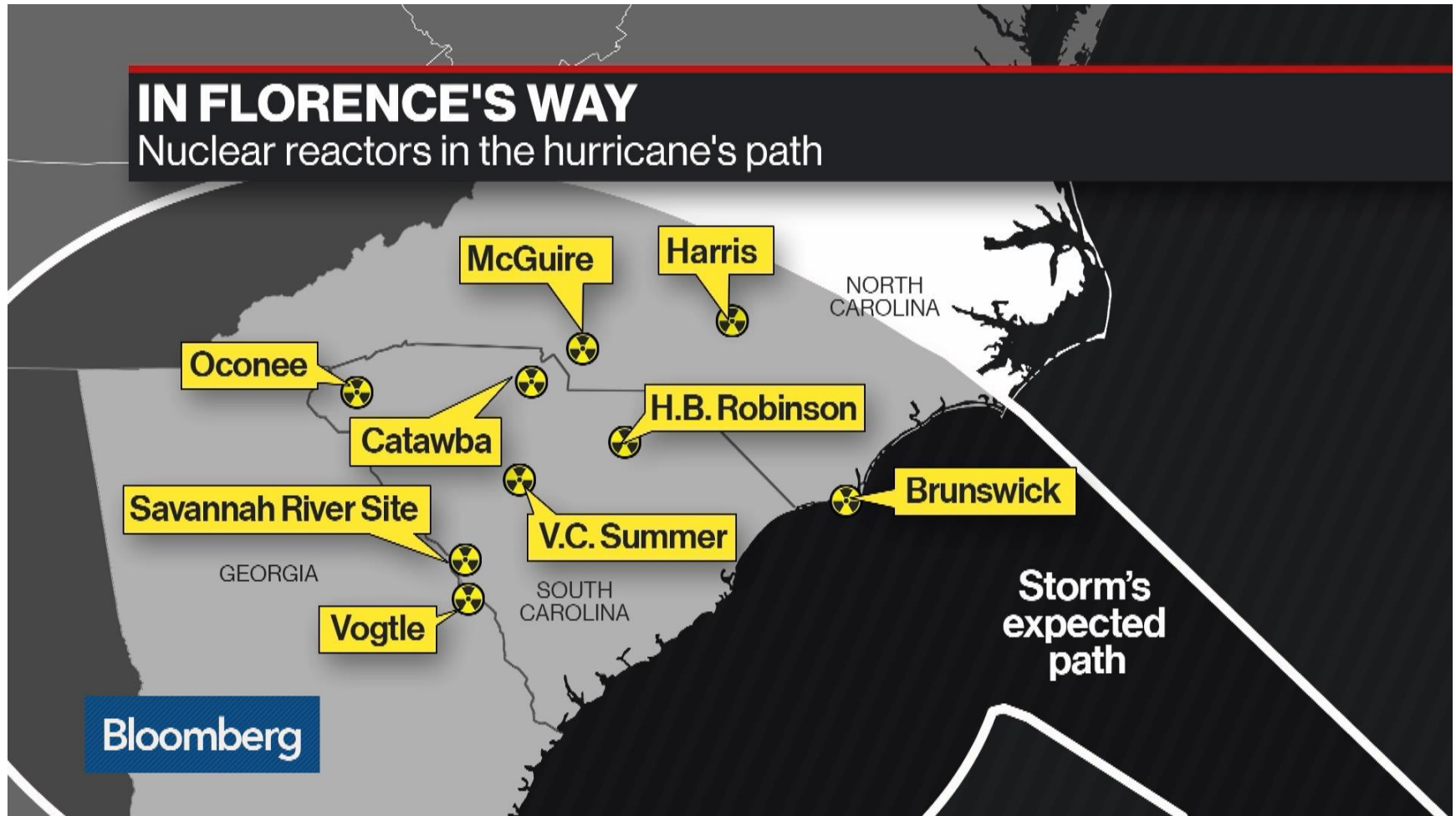
2017 Hurricane Harvey



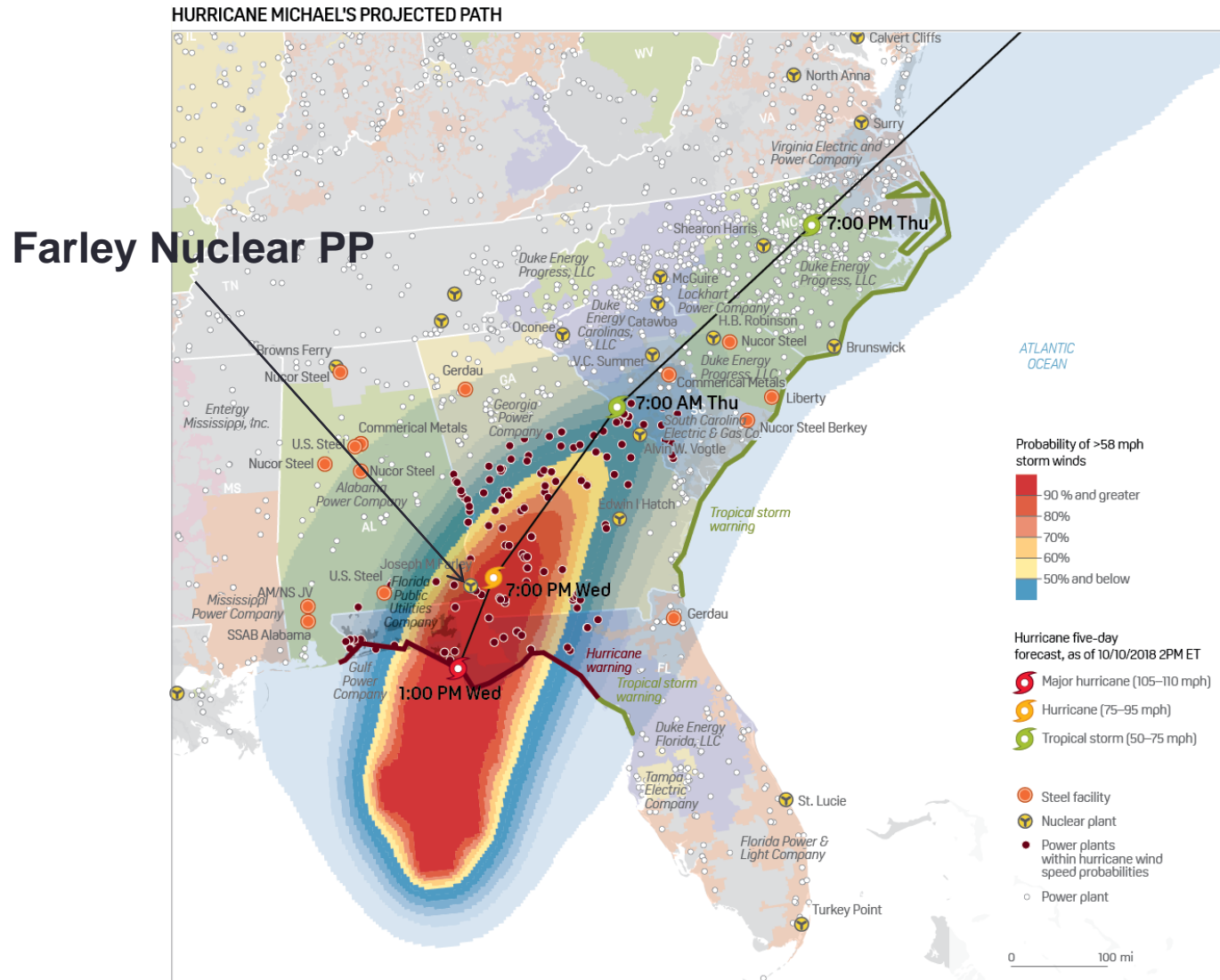
2017 Hurricane Irma



2018 Hurricane Florence



2018 Hurricane Michael



Source: S&P Global Platts Analytics; S&P Global Market Intelligence; National Hurricane Center; Association for Iron & Steel Technology

Oconee NPP and Jocassee Dam



PREPARING FOR RESILIENCE

Working with Faith Communities to Advance Adaptation, Recovery, and Resilience

Tim Judson

Executive Director

Nuclear Information & Resource Service

Contact:

(301) 270-6477 x14

timj@nirs.org

www.nirs.org

Twitter: @nirsnet

Carolinas Climate Resilience
October 29, 2018

