



# Intergovernmental Pilot Project

Emily Steinhilber  
Old Dominion University  
[esteinhi@odu.edu](mailto:esteinhi@odu.edu)

# Why Hampton Roads?

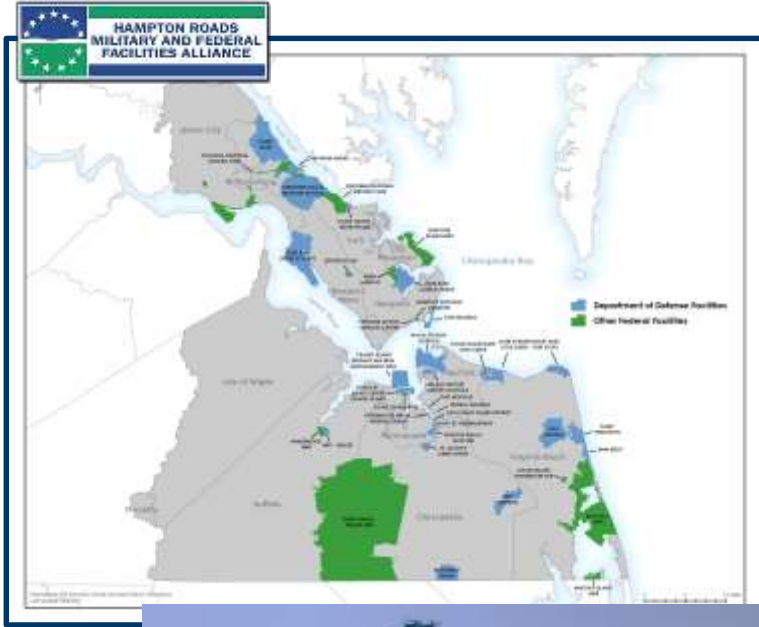


Photo: Port of Virginia

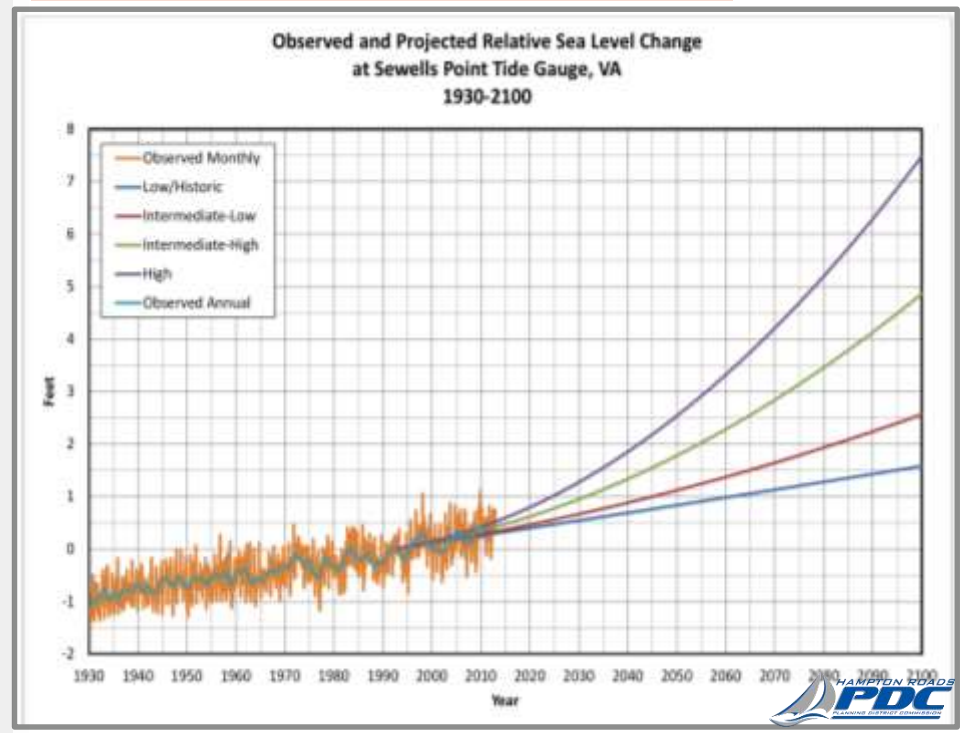
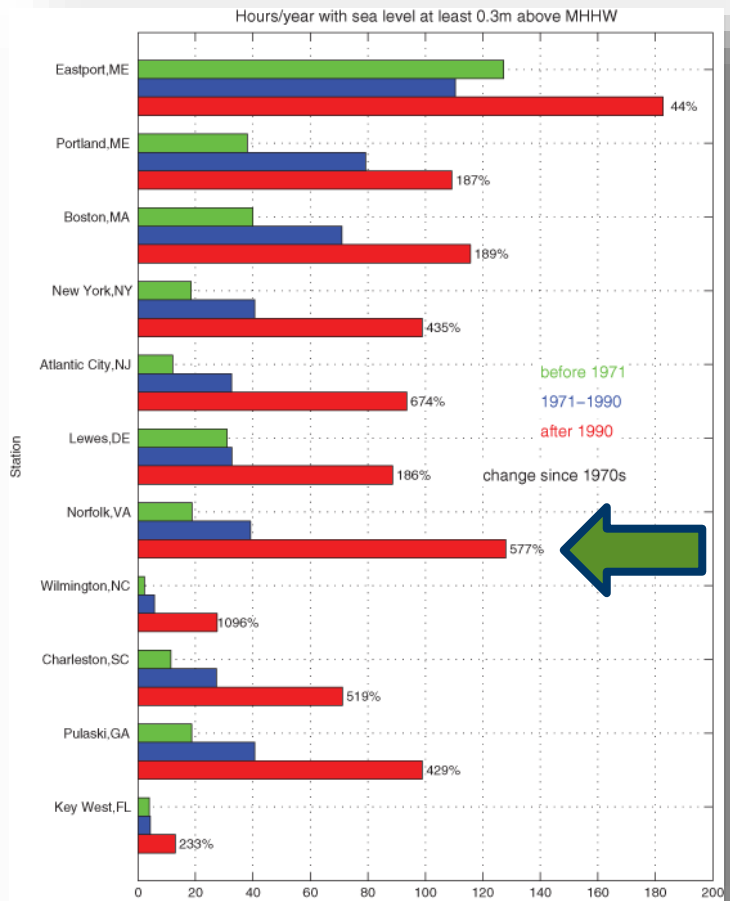


- Federal Assets
  - Naval Station Norfolk
  - Langley-Eustis
  - Little Creek, etc.
- Port of Virginia
- Tourism

# Why Hampton Roads?



Highest rates of relative SLR along the East Coast



Ezer, T., & Atkinson, L. P. (2014). Accelerated flooding along the US East Coast: on the impact of sea-level rise, tides, storms, the Gulf Stream, and the North Atlantic oscillations. *Earth's Future*, 2(8), 362-382.

# Mission & Vision



## MISSION

- Develop a regional **“WHOLE OF GOVERNMENT”** and **“WHOLE OF COMMUNITY”** approach to SLR Preparedness and Resilience Planning by June 2016

## VISION

- An **intergovernmental planning organization** that can effectively coordinate the sea level rise preparedness and resilience planning of **Federal, state and local government agencies** and the private sector, taking into account the perspectives and concerns of the **citizens** of the region.

# Who to involve?



## The Virginian-Pilot PilotOnline.com

GUEST COLUMNIST

[Home](#) / [Opinion](#) / [Columnists](#) / [Guest Columnist](#)

### Bonney: Voices missing from sea-level rise talks

By Chris Bonney  
Jun 8, 2014

Given its vulnerability, but also its talents, Hampton Roads should be the nation's thought and practice leader when it comes to addressing rising waters. Yet, the recently announced White House study initiative, described by The Virginian-Pilot as a partnership of "government, academia and business," is missing a critical link.

# Collaboration: A sample of partners



US Army Corps of Engineers  
Norfolk District



THE PORT OF VIRGINIA



Sea Grant  
Virginia



NORFOLK



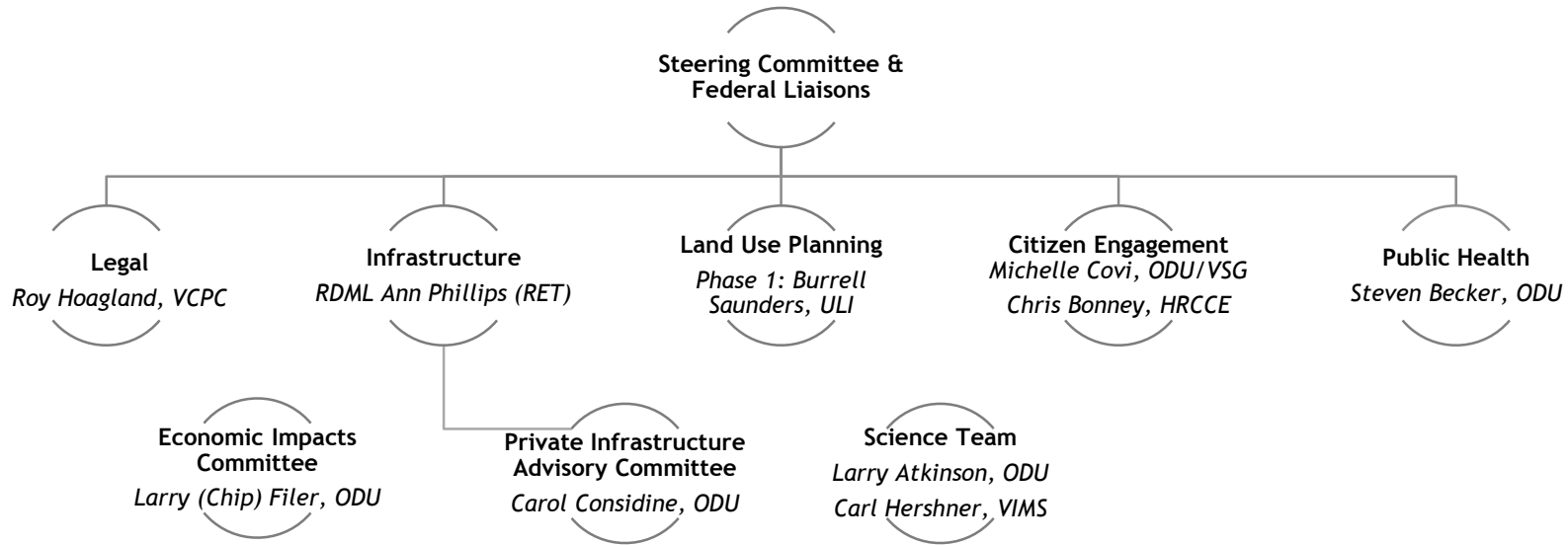
City of  
Virginia Beach



*Life. Celebrated Daily.*



# General Operating Structure



# Overall IPP Strategy



**Model WOG+WOC  
Framework**



**Collaborative  
Process Established  
for Hampton Roads**



**Applied Research  
& Resources**



# Intergovernmental Pilot Project



- Volunteer Led 2 Year Project w/ Support from the White House & DOD guided by Charter
- Goal of developing a framework to effectively coordinate SLR preparedness and resilience planning
  - Template for our federal partners
- Focus on Process:  
Federal+State+Local+Community
- Case Studies



# Building Regional Networks



- Locally:
  - Bringing local stakeholders together
  - Other resilience initiatives in Hampton Roads & Virginia
  - IPP Case Studies
- Other Regional Approaches:
  - New Orleans
  - Florida
  - DOD Pilot: Michigan Army National Guard

# Wrapping Up the IPP



- Phase 2 Report (Currently in Draft), Recommendations, and Resolution
- JLUS Study
- Center for Recurrent Flooding Resiliency (ODU, VIMS, W&M)
- Institutionalize IPP Relationships Continued partnerships, applied research, and community engagement



Courtesy of the Mace & Crown



## Questions?

Contact:

[esteinhi@odu.edu](mailto:esteinhi@odu.edu)

Information:

[www.centerforsealevelrise.org](http://www.centerforsealevelrise.org)